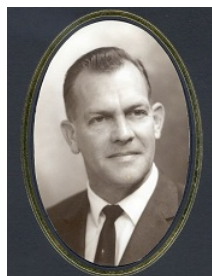


Search

[Parliamentary Business](#) ▾[Members](#) ▾[About Parliament](#) ▾[Get Involved](#) ▾[Visit and Learn](#) ▾

Members' biographical register

[Home](#) → [Members' biographies](#)

Roy Frederick Claughton

Principal Honours

Birth Date: 14 August 1927

Place: Bassendean, Western Australia

Arrival in WA

Parents Son of James Edward Frederick, nurseryman/green-keeper and curator for Western Australian Cricket Association (WACA), and Mabel Alice Parker**Marriage and Family** Married 14 May 1955, St Mary's Church, West Perth to Judith Mae Devereux (daughter of Timothy Michael and Frances Mae Abbott)
Children: two sons and two daughters**Death** Date: 26 April 2012

Place: Kalamunda, Western Australia

Cemetery: Taken by funeral director at Karrakatta Cemetery

Cause of Death:

Religion Church of England**Education** Bassendean Primary School and Perth Boys School
University of Western Australia
Claremont Teachers' College (BA, Dip of Teaching)**Occupation** Teacher

Search register

Search

[Advanced Search](#)

Members' biographical register

Information on elected and nominated members since 1870.

[About biographical register](#) >[President and office holders](#) >[Upper House seating plan](#) >[Speaker and office holders](#) >[Lower House seating plan](#) >[What Members do](#) >[Find a former MP](#) >

Employment History Worked as storehand 1942–1948
 Assisted father in nursery business 1949–1950
 Trainee teacher 1951–1953
 Teacher at Morawa Primary School 1954–1956; Bridgetown Junior High School
 1957–1959; North Perth Primary School 1960–1962; Innaloo Primary School
 1963–1966; Mirrabooka High School 1967

House MLC

Local Government Perth Shire Council May 1969–May 1970
 Service

Party Labor
 Joined Australian Labor Party (ALP) 1966
 Life member 1980
 WA State Parliamentary Branch ALP

Date Elected 22 May 1968

Inaugural Speech



[Claughton, Roy Frederick, Inaugural Speech.pdf](#)

Inaugural Video

Speeches [Search for speeches by Roy Claughton](#)

Valedictory Speech

Year Retired/Resigned 1980

Electorate North Metropolitan

Parliamentary Service [Electoralates](#)

- MLC North Metropolitan Province 22 May 1968–21 May 1980
- Contested North Metropolitan Province 23 March 1980

Office

- Party Whip 1974–1980

Committees

- Deputy Chairman of Committees 1971–1974
- Member Standing Orders Committees 1971–1974
- Member Joint Printing Committee 1977–1980

Royal Commissions

- Member Honorary Royal Commission on the Corridor Plan for Perth 1971–1972

Commonwealth Parliamentary Association

- Represented WA branch Commonwealth Parliamentary Association at 14th Australasian Regional Conference, Adelaide, 1977

Private Member's Bills

Background/Membership Founding chairman Family Planning Association 1971, life member
 Patron Abortion Law Reform Association from 1969
 Member Board Western Australian Museum 1974
 Member Board Perth Institute of Film and Television 1971–1974, 1978–1980
 Member Lotteries Commission 1983-1986
 Member and then chairman Charitable Collections Advisory Committee from circa 1984

Qualifications

References D Black and G Bolton, eds, *Biographical Register of Members of the Parliament of Western Australia: volume two 1930-2010*, Western Australian Parliamentary History Project, Perth, WA, 2011, p. 47.
 Metropolitan Cemeteries Board website. Accessed 6 May 2015.
<http://www2.mcb.wa.gov.au/NameSearch/details.php?id=KC00189181>
Who's Who in Australia (1977)

Further Information

[Home](#) / [Privacy](#) / [Disclaimer](#) / [Copyright](#)

[Glossary](#) / [Contact us](#) / [Careers](#) / [Using this website](#) / [Related sites](#)

Acknowledgement of Country

The Parliament of Western Australia is honoured to be situated on the ancestral lands of the Whadjuk Noongar people. The Parliament acknowledges the First Australians as the traditional owners of the lands we represent and pays respects to their Elders both past and present.

